



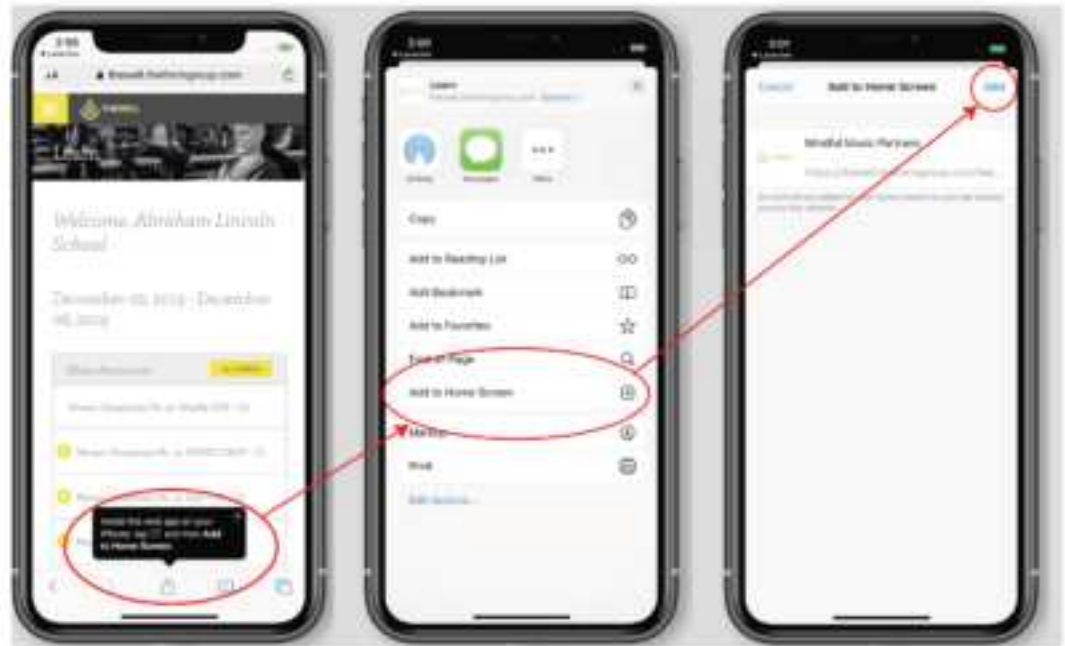
THE WELL WEB APP INSTRUCTIONS

INSTALLATION

The app can be installed via the traditional web portal. To access it, go to <https://app.thewell.world> and log in with your unique password. Depending upon your device, the process of installing the app takes approximately 30 seconds. The following screenshots provided an overview of the process on different devices.

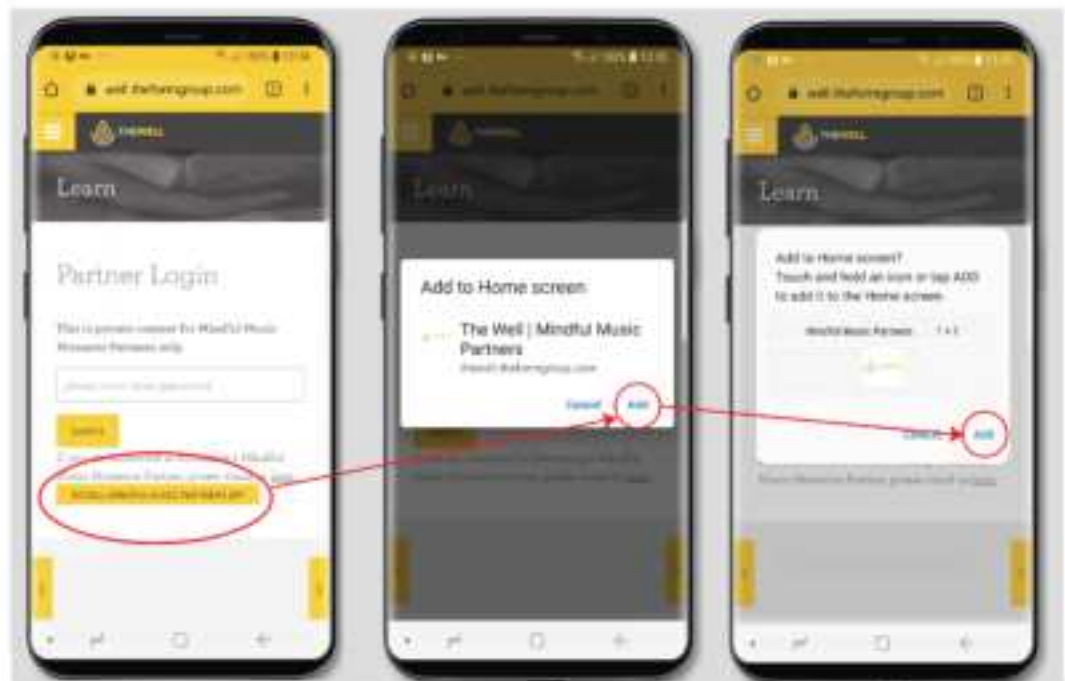
IOS INSTALL

The app is supported on an iPhone or iPad running iOS 13. It must be installed using the Safari browser. (Installing via a Chrome browser is not yet supported.) In Safari, installing the app is done by clicking the Add to Home screen button under the Share icon. This appears on the main screen after logging in.



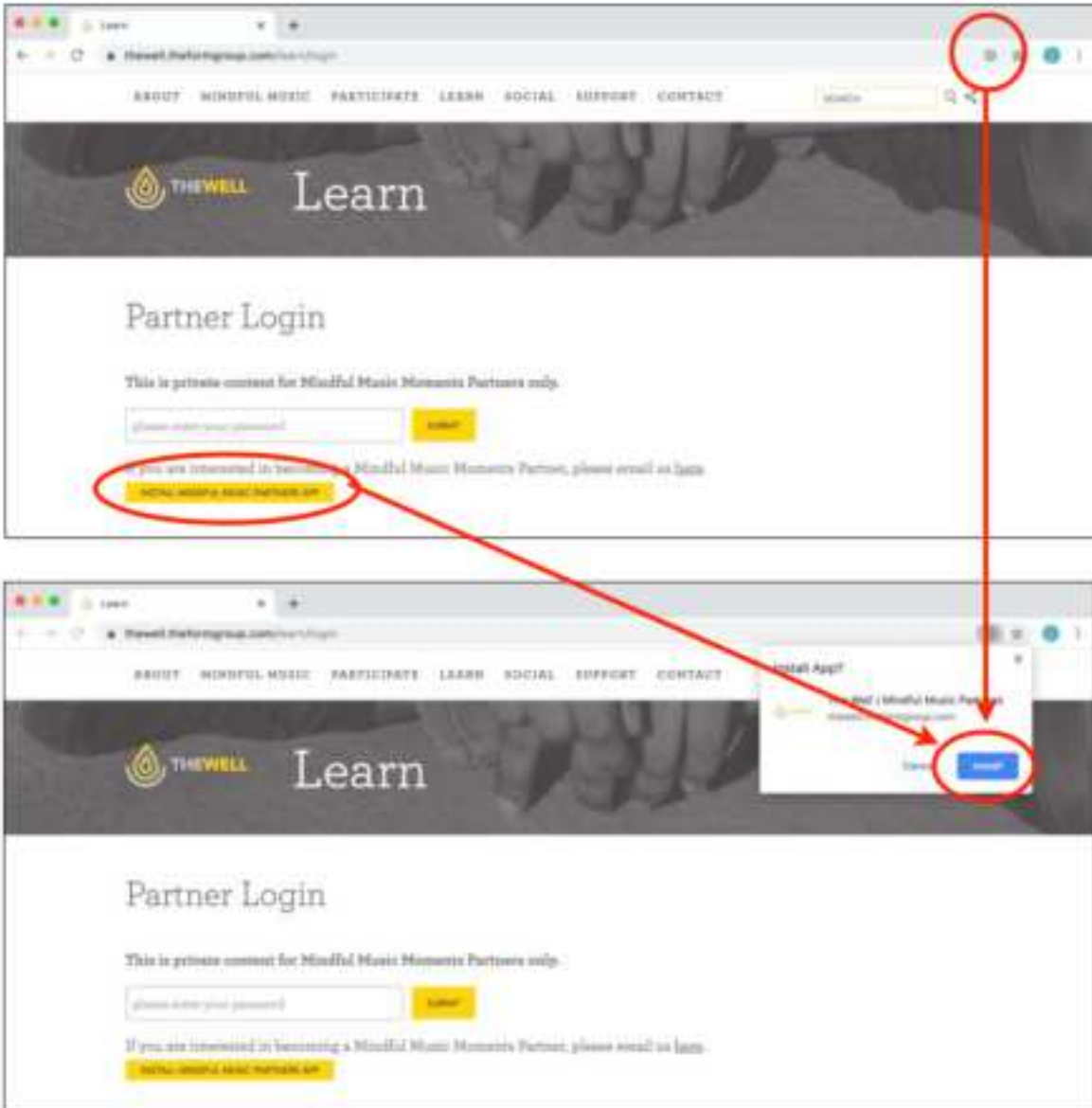
ANDROID INSTALL

The app is supported on Android running the current Oreo OS. It can be installed via Google Chrome by clicking the Install Mindful Music Moment app button on the login screen.



WINDOWS OR MAC DESKTOP INSTALL VIA CHROME

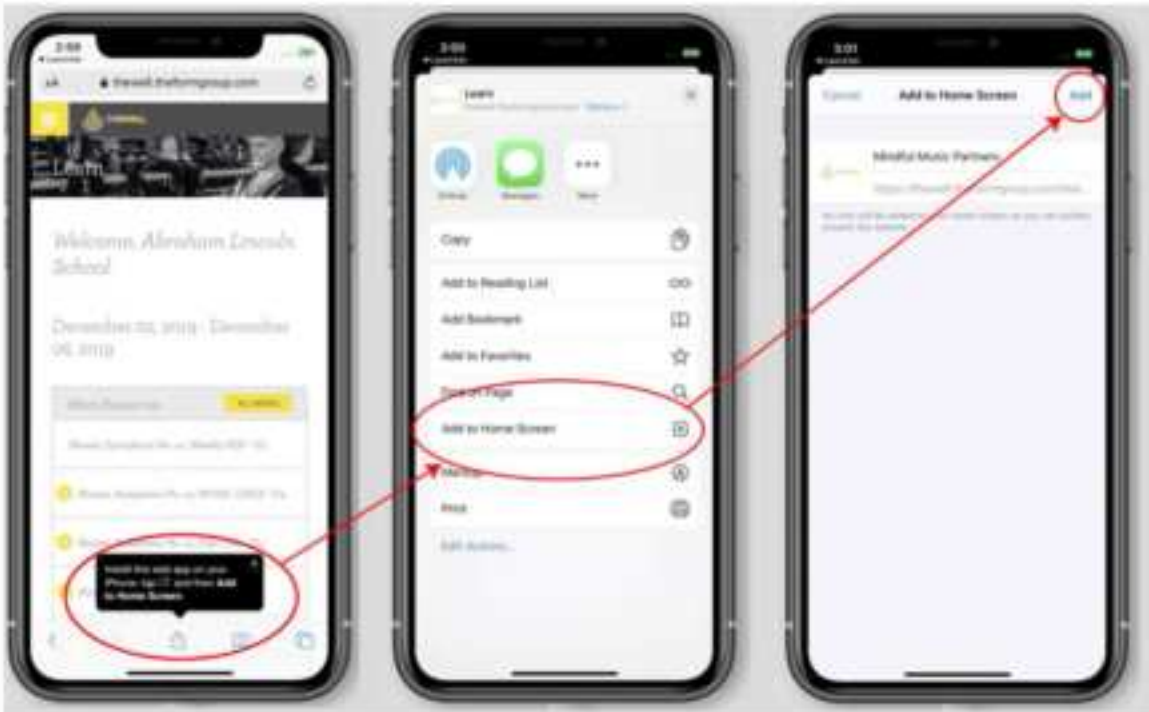
When accessing the app via a Chrome browser in Windows or a Mac, an Install Mindful Music App icon is displayed. Clicking this will bring up an Install dialog box to complete the installation. Alternatively, clicking the plus icon in the address bar where the URL is shown will also initiate the same process.



Once the app is installed, a desktop icon will be available in the *User Home Folder -> Chrome Apps*. This can be dragged to the desktop for easy future access.

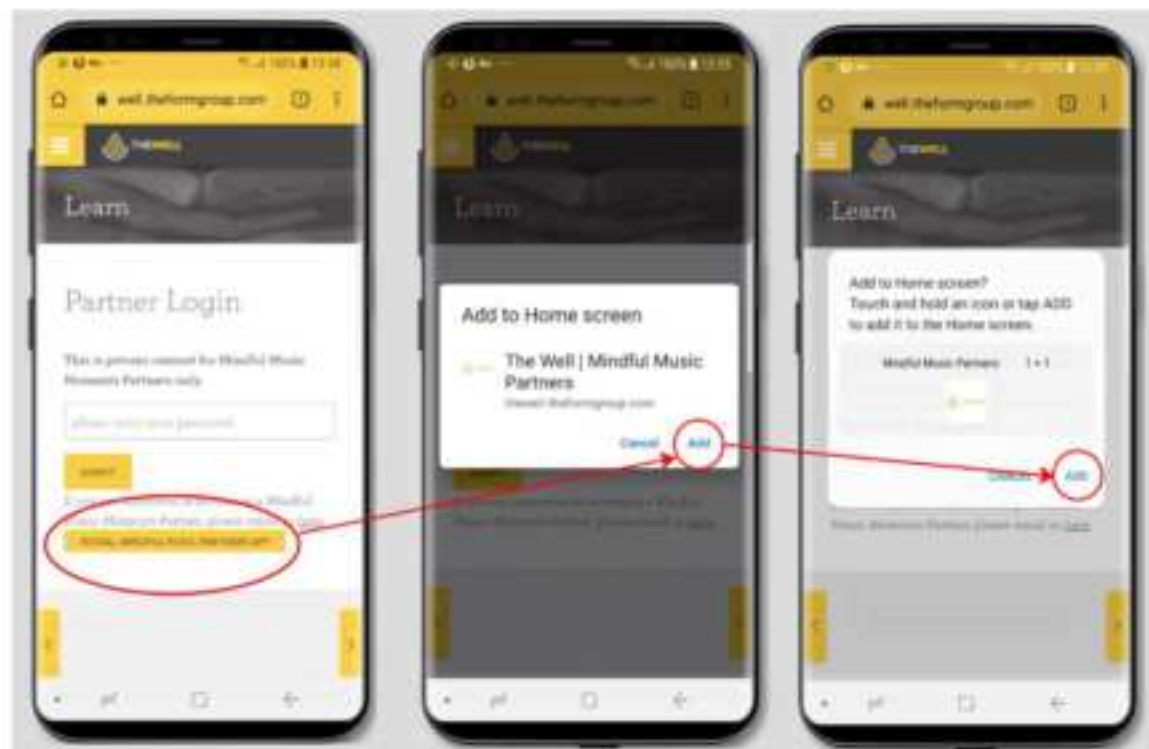
IOS INSTALL

The app is supported on an iPhone or iPad running iOS 13. It must be installed using the Safari browser. [Installing via a Chrome browser is not yet supported.] In Safari, installing the app is done by clicking the Add to Home screen button under the Share icon. This appears on the main screen after logging in.



ANDROID INSTALL

The app is supported on Android running the current Oreo OS. It can be installed via Google Chrome by clicking the Install Mindful Music Moment app button on the login screen.



IPAD OS INSTALL

The method to install the app on an iPad is similar to iPhone and also via Safari. In Safari, installing the app is done by clicking the Add to Home screen button under the Share icon.

